

SFC&G

San Francisco Cottages and Gardens

COTTAGESGARDENS.COM | JUNE/JULY 2016

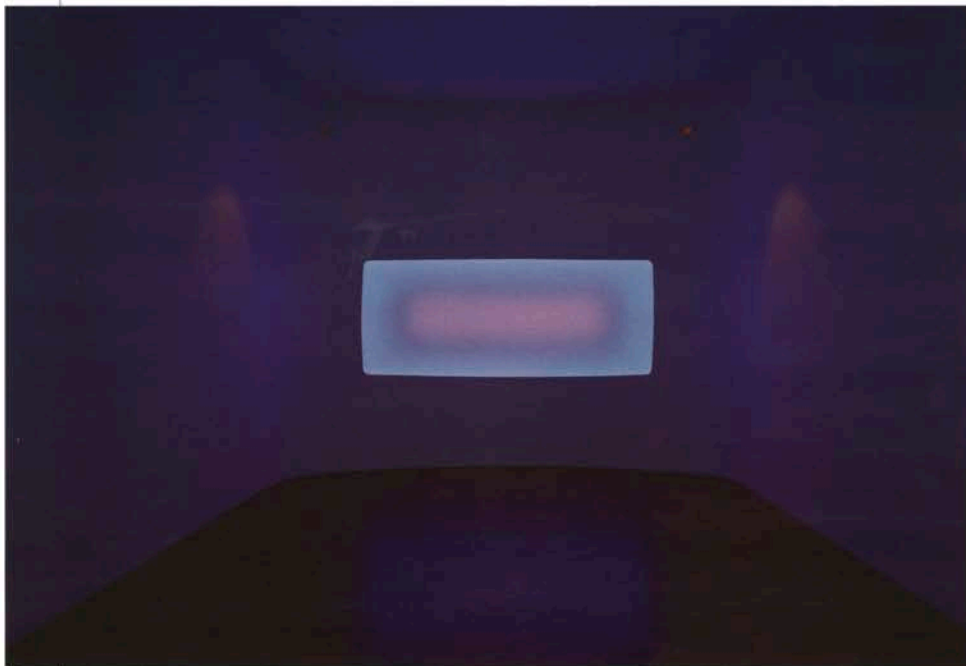
LIGHT + SPACE

STANFORD
PALM SPRINGS
HILLSBOROUGH
TELEGRAPH HILL

*Brilliant Summer Style
Homes with Breathing Room
Bold New Galleries*

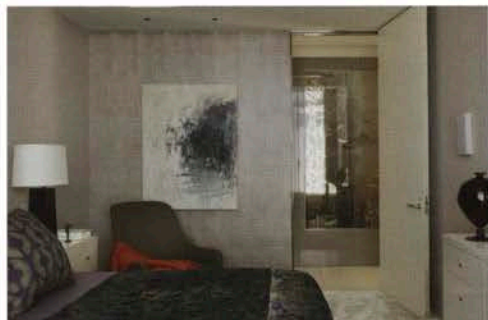
CALENDAR

ARTFUL INSPIRATION FROM THE BAY AREA DESIGN SCENE



LUMINOUS MIND

Pace Gallery inaugurates its first permanent Bay Area space with a solo exhibition by James Turrell. The 3,200-square-foot Palo Alto site showcases work from Turrell's luminous *Wide Glass* and *Hologram* series, highlighting his ongoing investigation of color, light, perception and space. Now through July 30, for more information call 650-462-1368 or visit pacegallery.com.



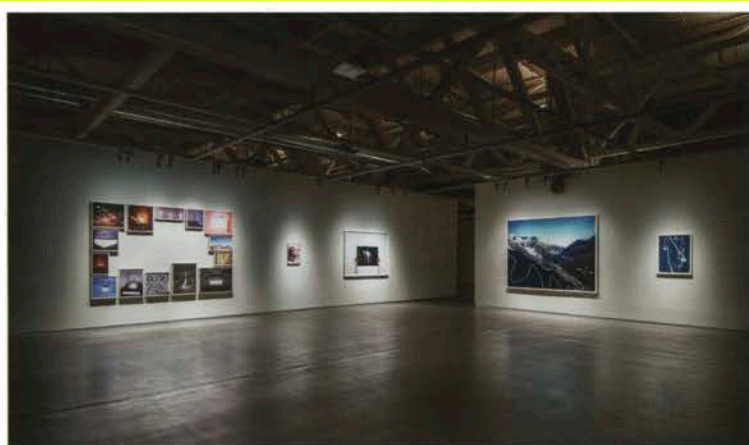
NEW TRADITIONS

Building on the legacy of Bay Area architect Julia Morgan, the biennial Julia Morgan Awards are a celebration of the San Francisco architecture and design community's exceptional work in the spirit of classical traditions. The 2016 honorees include architects Andrew Skurman and Charlie Barnett, interior designers Tucker & Marks and the Wiseman Group, and landscape architect Elizabeth Everdell. Thursday, June 16, for more information, call 415-445-6700 or visit classicalist-nocal.org.



TAKING FLIGHT

San Francisco Art Institute and the Kadist Art Foundation present *Feathered Changes, Serpent Disappearances*, an exhibition by Berlin-based artist Mariana Castillo Deball. A new annual partnership established to support artist-curated projects and young curators, the SFAI + Kadist Fellowship enabled Deball to spend five weeks in San Francisco developing the installation, which was inspired by the archeological archives of the Fine Arts Museums of San Francisco and the visual art of composer John Cage. Now through July 30, for more information call 415-749-4563 or visit sfai.edu.



VIEWFINDER

Pier 24 honors the history of Bay Area photography with its eighth exhibition, *Collected*. The show highlights a selection of photographs from the Pilara Foundation and nine area collectors, including Chara Schreyer, Nion McEvoy and Susie Tompkins Buell. The exhibition reflects each collector's interpretation of the art form and spans works from Robert Frank to emerging artist Erica Deeman. On view now through Feb. 28, 2017, for more information call 415-512-7424 or visit pier24.org.

JAMES TURRELL, PELLE, 2014, WIDE GLASS, 86-13/16 X 159-7/16 X 19-11/16", PHOTOGRAPH BY FLORIAN HOLZHERR © JAMES TURRELL, COURTESY PACE GALLERY (LIGHT & SPACE); INSTALLATION VIEW, MARIANA CASTILLO DEBALL; FEATHERED CHANGES, SERPENT DISAPPEARANCES, WALTER AND MCKEAN GALLERIES, SAN FRANCISCO ART INSTITUTE, PHOTOGRAPH BY STEPHANIE SMITH (TAKING FLIGHT); COLLECTED, PIER 24 PHOTOGRAPHY, SAN FRANCISCO; INSTALLATION VIEW, PHOTOGRAPHY COURTESY OF PIER 24 PHOTOGRAPHY, SAN FRANCISCO (THE LONG VIEW); VILLAFRANCA STUDIOS - EGLIOWISE, SCHOOL OF FISH, PHOTOGRAPH BY MATTHEW MILLMAN (HONORING TRADITION)